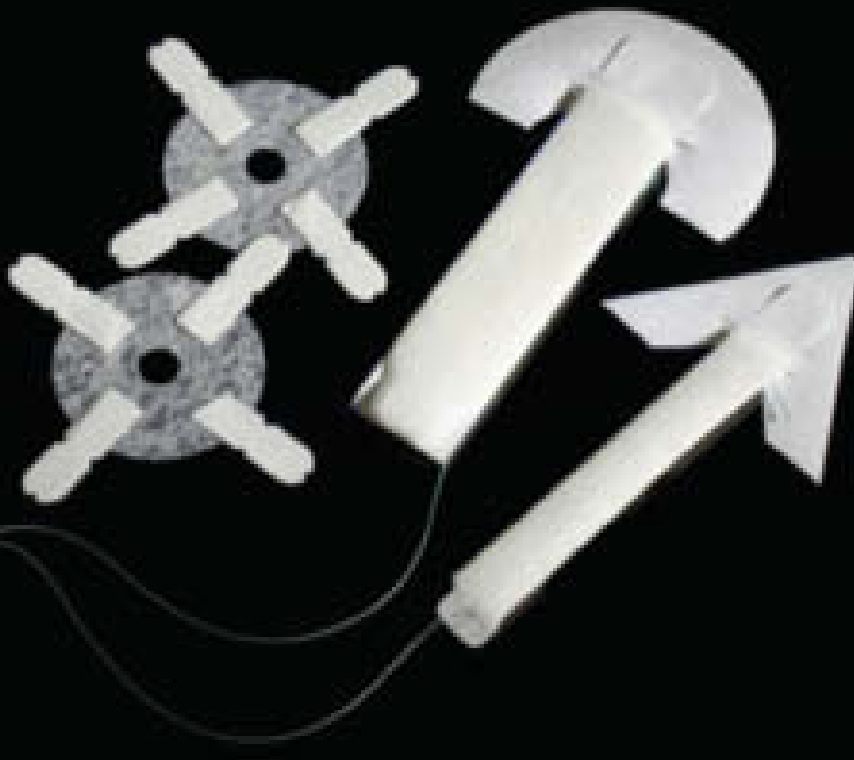
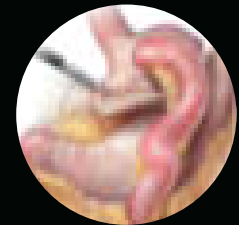


Reinforce with confidence



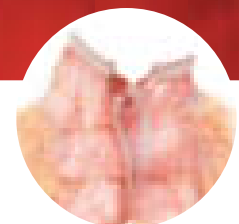
Pulmonary Resection



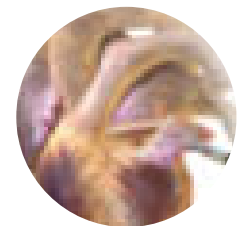
Gastric Resection



Sleeve Gastrectomy



Intestinal Anastomosis



Left Atrial Appendage Ligation

PERFORMANCE through innovation

GORE® SEAMGUARD® Bioabsorbable Staple Line Reinforcement consists of a unique, patented synthetic tissue scaffold that provides consistent, predictable performance, every time.

The product is **engineered to reduce the incidence of perioperative leaks and bleeding in a variety of open and minimally invasive surgeries**^{1,2}. Then, within six to seven months, GORE® SEAMGUARD® Bioabsorbable Staple Line Reinforcement is completely absorbed, eliminating the risk of a prolonged inflammatory response.

- Most clinical literature supporting leak reduction³
- Strongest clinical literature supporting reduced bleeding
- 100% bioabsorbable, synthetic material
- Uniform, thin material
- No migrations or erosions reported
- No risk of animal source contamination

1. Franklin. Safety and efficacy of the use of bioabsorbable "Seamguard" in colorectal surgery at the Texas Endosurgery Institute. *Surgical Laparoscopy, Endoscopy & Percutaneous Techniques* 2005;15(1):9-13.
2. Consten ECJ, Gagner M, Pomp A, Inabnet WB. Decreased bleeding after laparoscopic sleeve gastrectomy with or without duodenal switch for morbid obesity using a stapled buttressed absorbable polymer membrane. *Obesity Surgery* 2004;14:1360-13 66.
3. W. L. Gore & Associates, Inc. *Clinical Performance with Staple Line Reinforcement*. Scientific Literature Analysis (n = 4689 patients). Flagstaff, AZ: W. L. Gore & Associates, Inc; 2013. AP6010-EN3. www.goremedical.com/seamguard/.



SEAMGUARD®
BIOABSORBABLE

STAPLE LINE REINFORCEMENT

Configured For Endoscopic Staplers

	STAPLING DEVICE	CARTRIDGE COLOR	CATALOGUE NUMBER
Ethicon Endo-Surgery	ENDOPATH® ETS 45 Endoscopic Transecting	White, Blue, Green	1BSGETS45
	ENDOPATH® ETS Flex 45	White, Blue, Green	1BSGETS45
	ENDOPATH® EZ 45	Blue, Green	1BSGEZ45
	ENDOPATH® ETS Flex 60	White, Blue, Green	1BSGETS60
	Echelon 45 ENDOPATH® Stapler	White, Blue, Gold, Green	1BSGEC45
	Echelon 60 ENDOPATH® Stapler	White, Blue, Gold, Green	1BSGEC60
	Echelon FLEX 60 ENDOPATH®	White, Blue, Gold, Green	1BSGEC60A
Covidien Autosuture	Endo GIA™ Universal Straight 45	White, Blue	1BSGUSS45B
	Endo GIA™ Universal Roticulator 45	White, Blue	1BSGUSS45B
	Endo GIA™ Universal Straight 45	Green	1BSGUSS45G
	Endo GIA™ Universal Roticulator 45	Green	1BSGUSS45G
	Endo GIA™ Universal Straight 60	White, Blue	1BSGUSS60B
	Endo GIA™ Universal Roticulator 60	White, Blue	1BSGUSS60B
	Endo GIA™ Universal Straight 60	Green	1BSGUSS60G
	Endo GIA™ Universal Roticulator 60	Green	1BSGUSS60G

Configured For Circular Staplers

	STAPLING DEVICE	CATALOGUE NUMBER
Ethicon Endo-Surgery	ENDOPATH® 25 and Proximate 25 (Staplers: ECS25, CDH25, SDH25)	1BSGC25
	ENDOPATH® 29 and Proximate 29 (Staplers: ECS29, CDH29, SDH29)	1BSGC2829
	ENDOPATH® 33 and Proximate 33 (Staplers: ECS33, CDH33, SDH33)	1BSGC3334
Covidien Autosuture	CEEA 25 (Staplers: 110214L, 111985)	1BSGC25
	CEEA 28 (Staplers: 110238L, 111987)	1BSGC2829
	CEEA 31 (Staplers: 110276L, 111989)	1BSGC31
	CEEA 34 (Stapler: 111981)	1BSGC3334
	DST Series™ CEEA 25 (Staplers: EEA25, EEAXL25, EEA2535, EEAXL2535, EEAORVIL25)	1BSGC25
	DST Series™ CEEA 28 (Staplers: EEA28, EEAXL28, EEA2835, EEAXL2835)	1BSGC2829
	DST Series™ CEEA 31 (Staplers: EEA31, EEAXL31)	1BSGC31
DST Series™ CEEA 34 (Staplers: EEA34, EEAXL34)	1BSGC3334	



W. L. GORE & ASSOCIATES, INC.
Flagstaff, AZ 86004

+65.67332882 (Asia Pacific)
00800.6334.4673 (Europe)
800.437.8181 (United States)
928.779.2771 (United States)

goremedical.com

ETHICON, ENDOPATH, and PROXIMATE are trademarks of Johnson & Johnson Corporation.
AUTOSUTURE, ENDO GIA, and Tri-staple are trademarks of Covidien AG or its affiliates.

Products listed may not be available in all markets
GORE®, PERFORMANCE THROUGH INNOVATION, SEAMGUARD®,
and designs are trademarks of W. L. Gore & Associates.
© 2011, 2012, 2013 W. L. Gore & Associates, Inc. AL2961-AU7 SEPTEMBER 2013